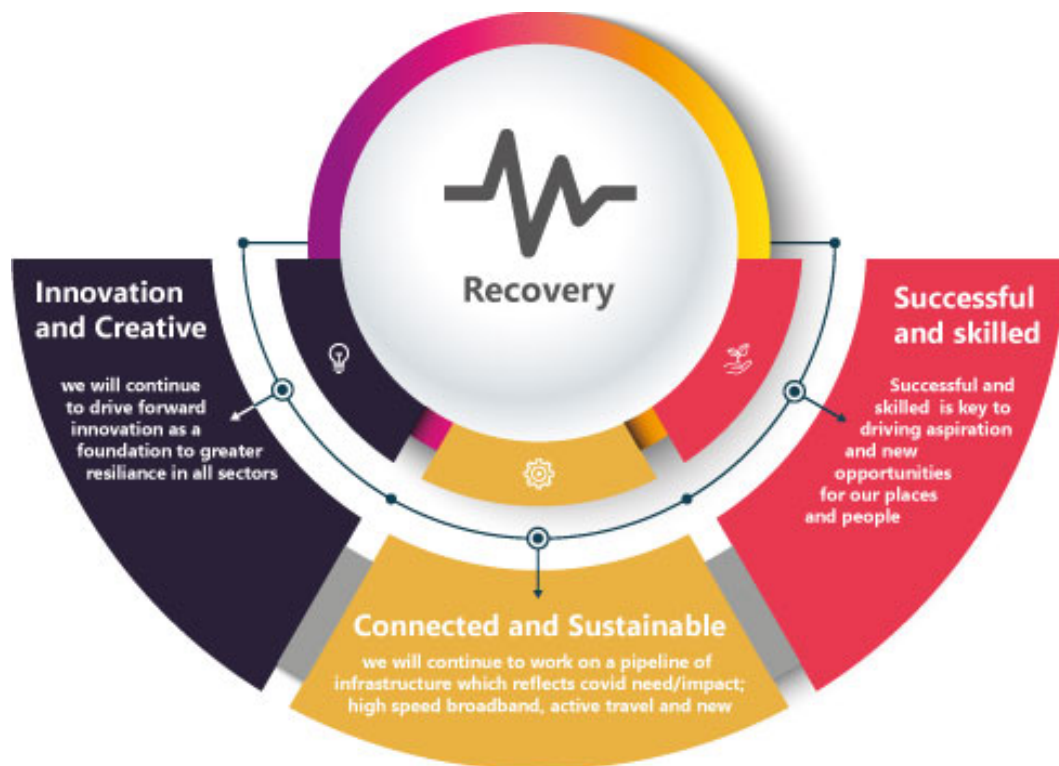


Business Innovation Support Scheme Prospectus





As part of Babergh and Mid Suffolk District Council's (BMSDC) economic strategy and recovery post Covid, BMSDC is helping to deliver sustainable economic growth by supporting businesses within our districts who are seeking to innovate, reduce their carbon footprint and stimulate the local economy.

BMSDC are pleased to offer a range of new grant schemes that are designed to specifically support local businesses by increasing productivity and encouraging economic growth.

There are 4 new grants that will help our local businesses from start-up to expansion:

- **Enterprise & Innovation Fund**
- **Growth & Increased Productivity Fund**
- **Environmental Sustainability Fund**
- **High Street Premises Enhancement Fund**

PLEASE NOTE: This grant cannot be used to fund projects already funded by grants dispersed by Babergh and Mid Suffolk District Council AND any grant funding previously received from BMSDC (e.g. Discretionary Restart Grant and/or Back To Business) cannot be used as match funding for this grant.

Total funding for these schemes will be £50,000 per district, per year, or until the funding is allocated/over-subscribed, or at the discretion of BMSDC.

Enterprise & Innovation Fund

Who is this for?

Any start-up or new business that has been trading for less than 12 months.

How much can I get?

Up to £5,000 towards helping the new business to utilise innovative ideas, processes or products.

What will it cover?

Set up costs including purchase of equipment & new technology, payment for professional advice such as legal or patent protection. Also, towards appointing new staff or apprentices or obtaining new skills or training.

How can I apply?

https://bmsdc-self.achieveservice.com/service/Business_Innovation_Support_Scheme



Growth & Increased Productivity Fund

Who is this for?

Any business that is looking to increase productivity, increase commercial floorspace or create new jobs or apprenticeships

How much can I get?

Up to £2,500 towards a project that will help to achieve business growth or increased productivity.

What will it cover?

Physical works to a building, professional advice, purchase of new equipment or technology, training or skills development. Also, the creation of new jobs or apprenticeships.

How can I apply?

[https://bmsdc-self.achieveservice.com/service/Business Innovation Support Scheme](https://bmsdc-self.achieveservice.com/service/Business%20Innovation%20Support%20Scheme)



Environmental Sustainability Fund

Who is this for?

Businesses wanting to improve their environmental performance, reduce energy costs, use renewable energy and lower their carbon footprint.

How much can I get?

Up to £2,500 towards improvements to buildings, fixtures, fittings, vehicles or machinery that will reduce energy consumption.

What will it cover?

Installation of Heat pumps or boilers, Solar panels, LED Lighting or Electric charging points for vehicles. Also upgrading machinery or using new technology and improving the thermal performance in buildings.

How can I apply?

[https://bmsdc-self.achieveservice.com/service/Business Innovation Support Scheme](https://bmsdc-self.achieveservice.com/service/Business%20Innovation%20Support%20Scheme)



High Street Premises Enhancement Fund

Who is this for?

Anyone who owns or rents a shop or commercial premises in a town or village centre (including registered charities).

How much can I get?

Up to £2,500 towards improvements to the premises

What will it cover?

Materials and labour for works such as: new shop fronts, external lighting schemes, cladding, signage for shop fronts, and new awnings. Also guttering and drainpipe repairs and replacement.

Improvements to access such as nosing on steps, widening of doorways, ramps for doorways or removal of steps, handrails, portable ramps, power assisted doors, disabled access signs, door bells and training staff to assist disabled customers.

How can I apply?

[https://bmsdc-self.achieveservice.com/service/Business Innovation Support Scheme](https://bmsdc-self.achieveservice.com/service/Business%20Innovation%20Support%20Scheme)



Application Requirements of the schemes:

- Valid business insurance certificate
- Confirmation of compliance with Subsidy Control restrictions:

<https://www.gov.uk/government/publications/complying-with-the-uks-international-obligations-on-subsidy-control-guidance-for-public-authorities/technical-guidance-on-the-uks-international-subsidy-control-commitments>

- Description of the project
- Evidence of match funding required at 50%
- 3 quotes to be supplied, the funding will be based on the lowest quote
- A copy of a bank statement dated within the last 3 months in the business name
- Funding cannot be used to fund projects that have already been funded by BMSDC.

The following businesses are ineligible:

- National retailers / chains / multiples with more than 3 locations
- Betting shops / pawnbrokers

For further information and to apply please visit: [Babergh & Mid Suffolk Grants and Loans » Babergh Mid Suffolk](#)

Please contact: **BMSDCEconomicDevelopment@baberghmidsuffolk.gov.uk** if you wish to find out more information on any of our grants or to discuss your proposal in detail.

Business Innovation Support Scheme Prospectus

