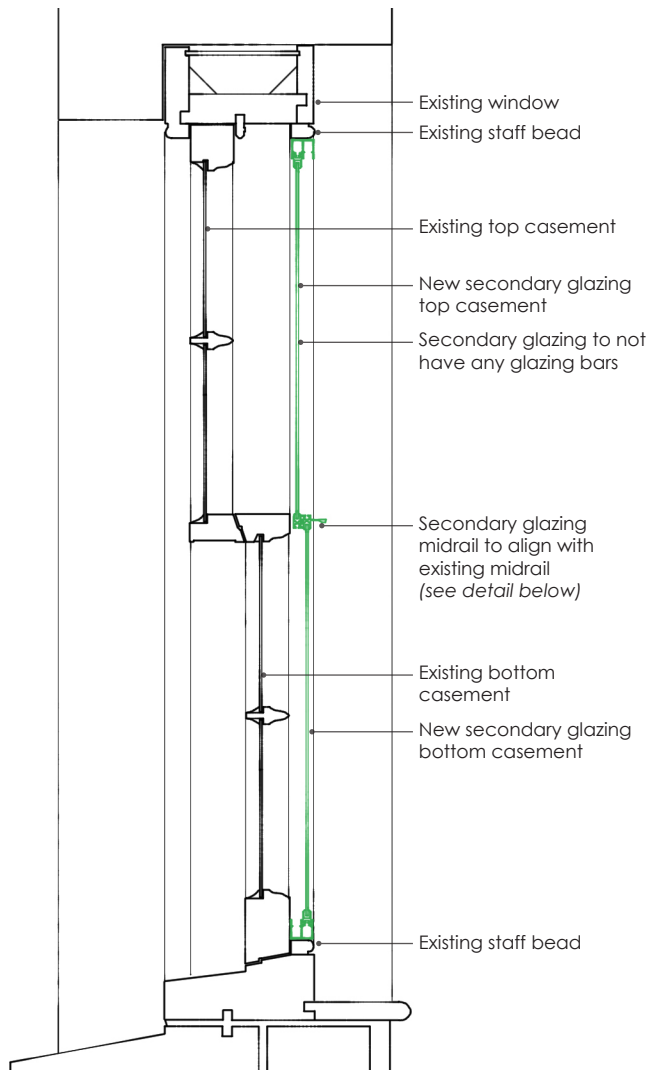
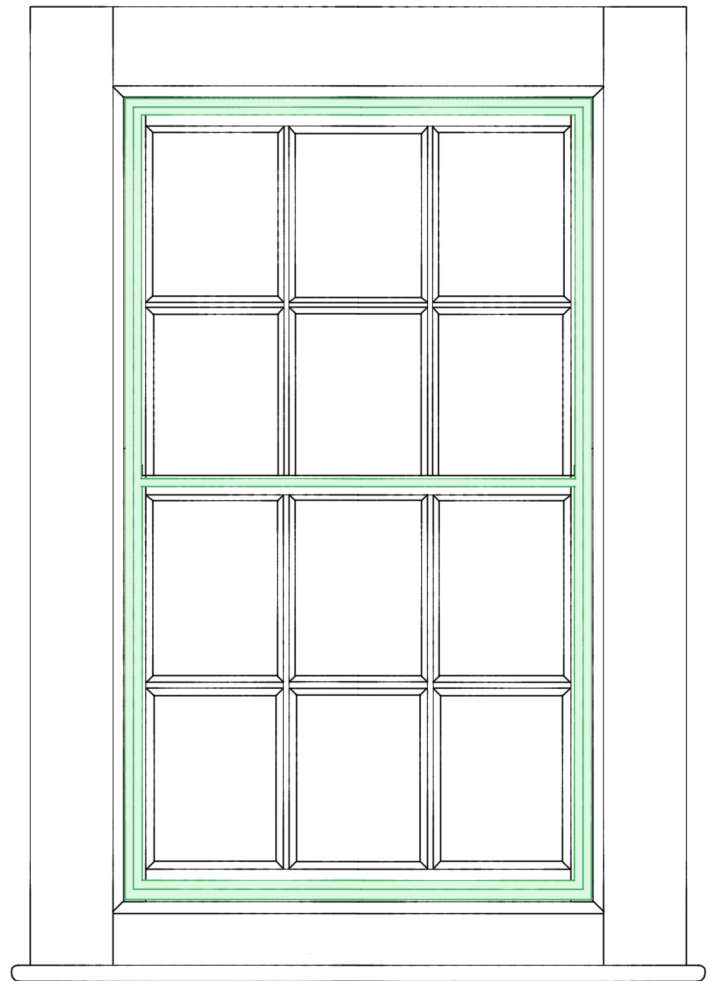


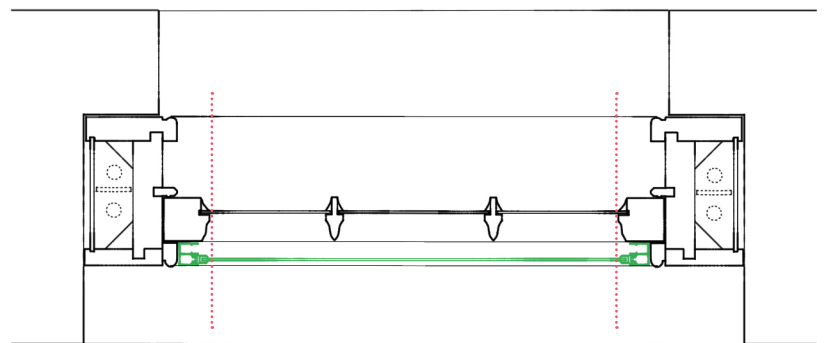
Model Example 1: Slimline aluminium frame secondary glazing installed within depth of existing window frame (*New secondary glazing indicated in green*)



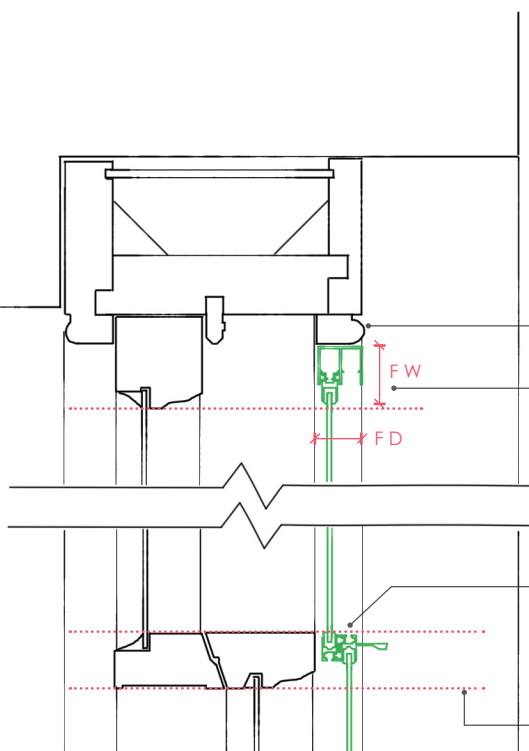
Section



Elevation



Plan



Detail

- Staff bead to remain exposed and visible after secondary glazing installation
- Secondary glazing frame:
- depth (*F D*) to be equal or less than existing staff bead and should not extend beyond the internal face of the bead
 - width (*F W*) not to extend beyond sight line of existing frame (on all sides)
- Top of secondary glazing midrail to align with top of existing midrail
- Bottom of secondary glazing midrail not to extend beyond bottom of existing midrail
- Dotted lines denote sight-lines of existing frame