

Appendix JM1: Conservation Area Important Views

Viewpoint 1: View to Engry Wood from the field entrance in Church Road next to Little Bush property.



Viewpoint 2: View across to Engry Wood from the field entrance in Church Road



Viewpoint 3: View across to Engry Wood from the field entrance in Church Road next to Falstaff Cottages.



Viewpoint 4: View of Falstaff Manor from footpath/farm track.



Viewpoint 5: View of the upper parts of St Mary's Church tower from field opening in Potash Lane to the right of the track to Falstaff Cottages entrance.

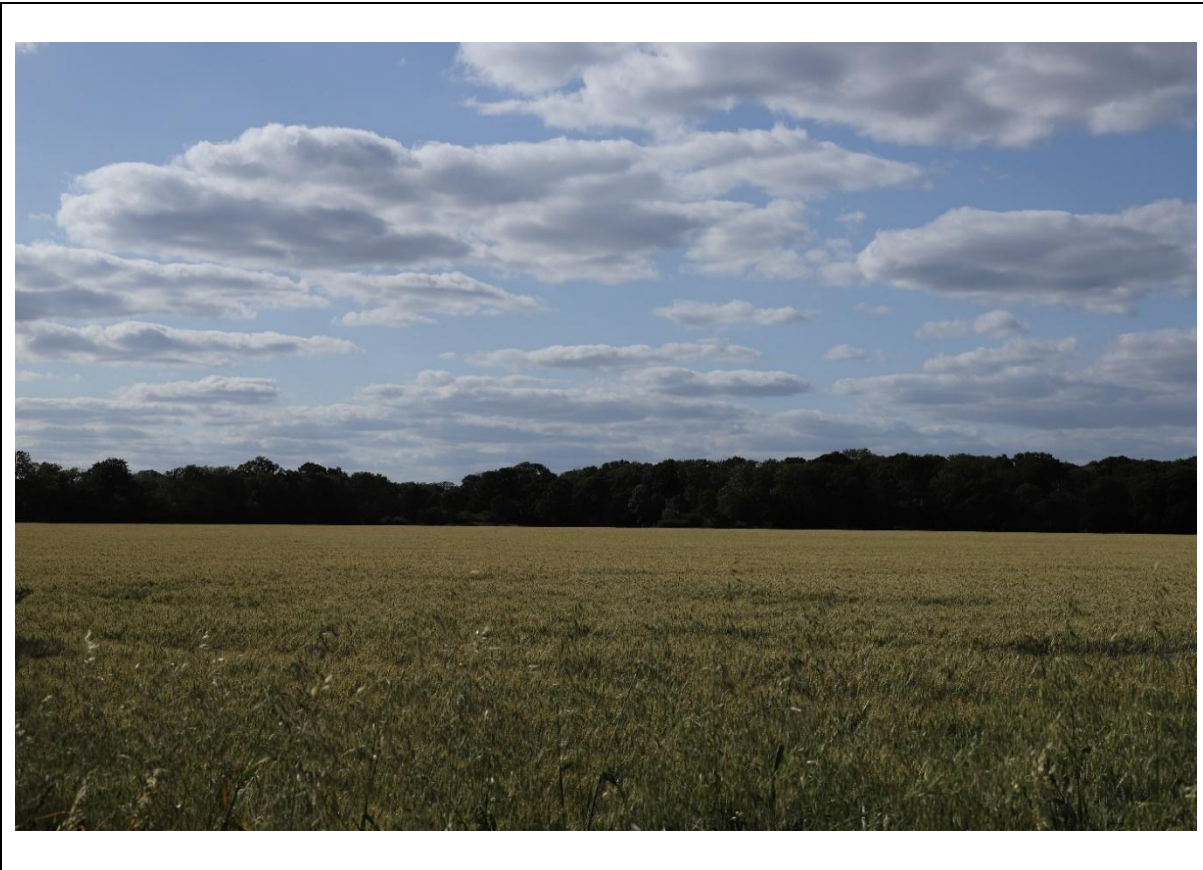


Viewpoint 6: Long views from wide field entrance in Potash Lane to Engry Wood and the Church tower.



Viewpoint 7: Long views from field entrance in Potash Lane to Engry Wood, Church Farm and the Church tower





Viewpoint 8: Views towards Engry Wood and the distant landscape south of Engry Wood due east towards the plantations on the banks of the Orwell.



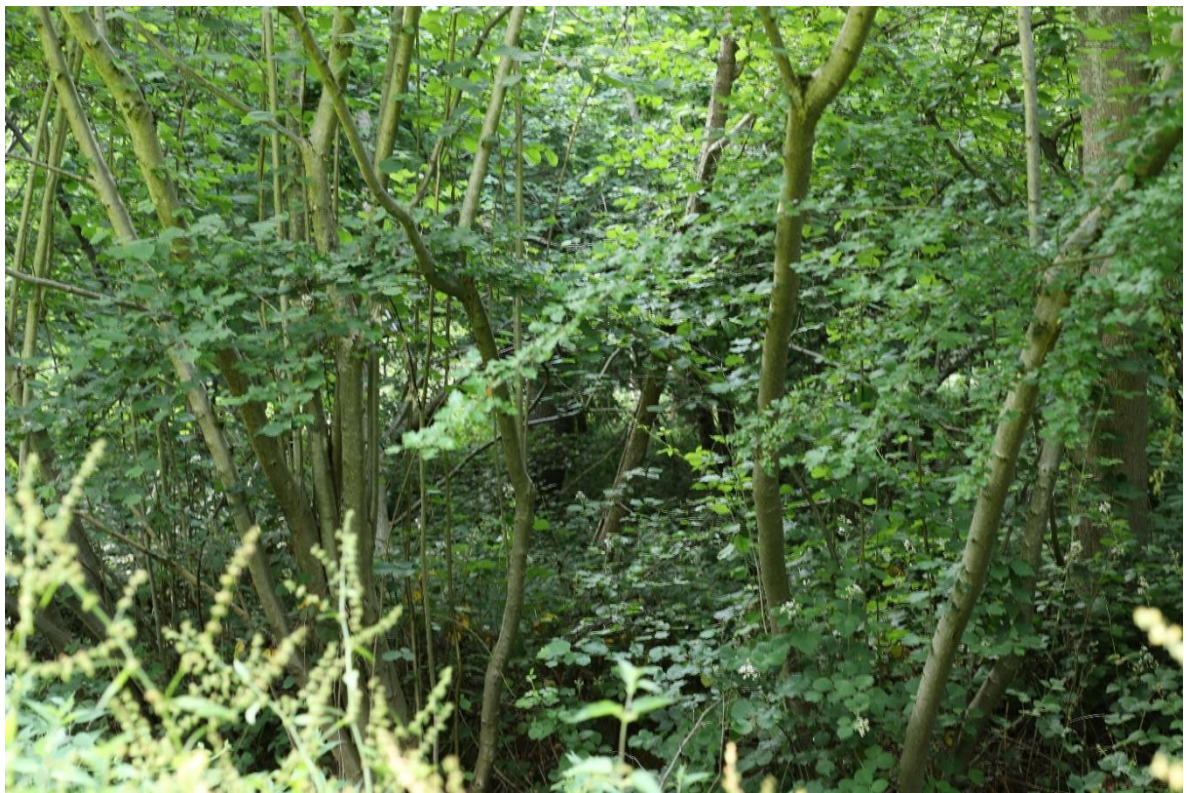
Viewpoint 9: Views into Engry Wood from Pond Hall Lane (especially attractive in spring when there are abundant numbers of bluebells and aconites).

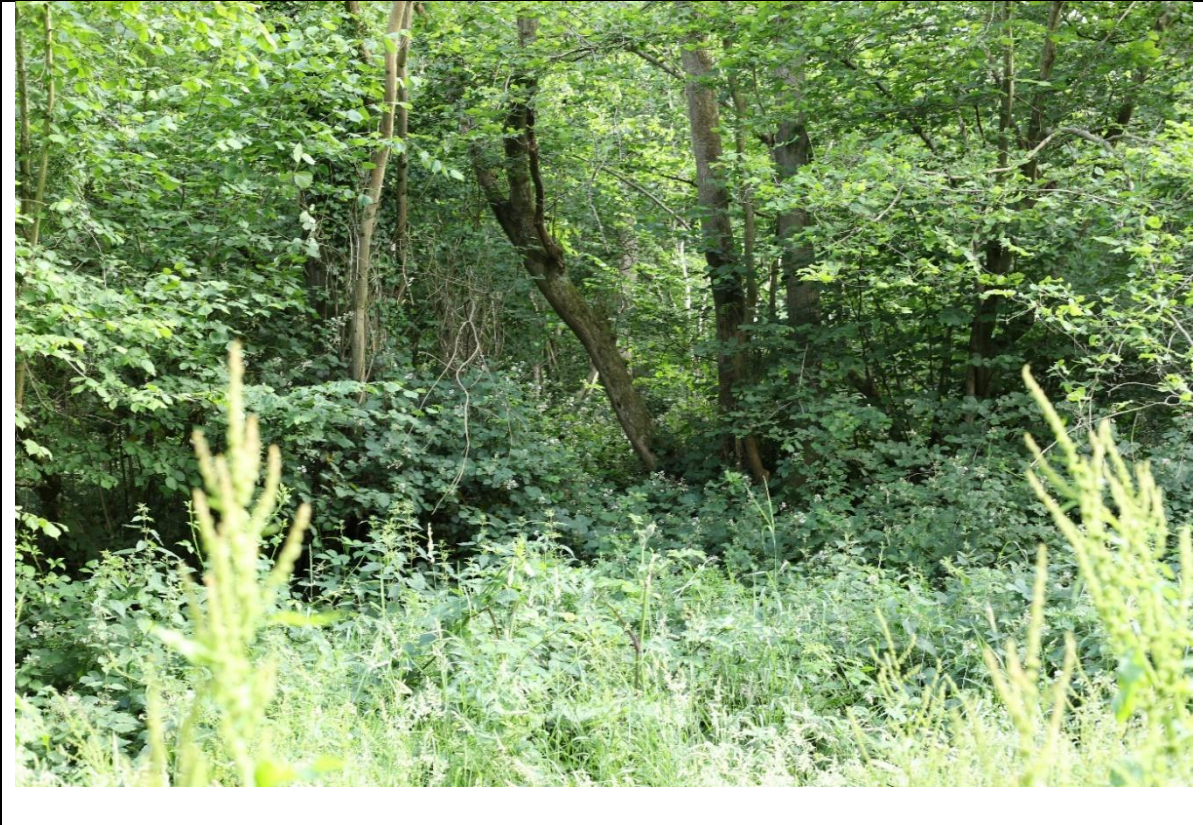


Viewpoint 10: Field views and of Fingery Grove from the footpath



Viewpoint 11: Wood views to Pedlar's Grove and Tare Grove from footpath.





Viewpoint 12: Views across to Engry Wood from the footpath



Viewpoint 13: Tree-lined walk with views towards woods in Bentley Park and towards Church Farm





Viewpoint 14: Views across Bentley Park and parkland including pond. The meadow land features an abundant quantity of daffodils in Spring.





Viewpoint 15: View from Church Road to Bentley Hall Stables/Meeting Hall and medieval fishponds allowing part of the historic setting of the buildings to be appreciated.



Viewpoint 16: Views to Bentley Hall Barn from Church Road showing its historic context.



Viewpoint 17: Views into Bentley Park parkland from Church Road.



Viewpoint 18: Views across to Bentley Old Hall from Old Hall Lane.



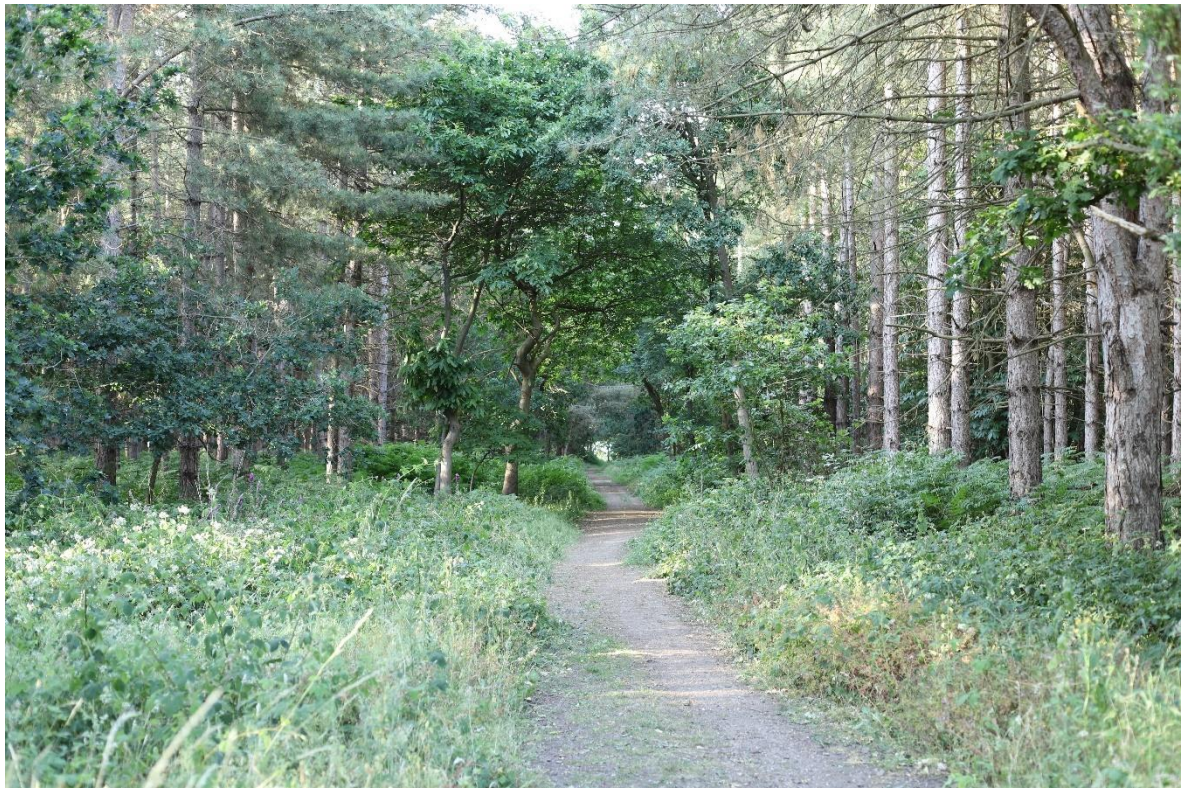
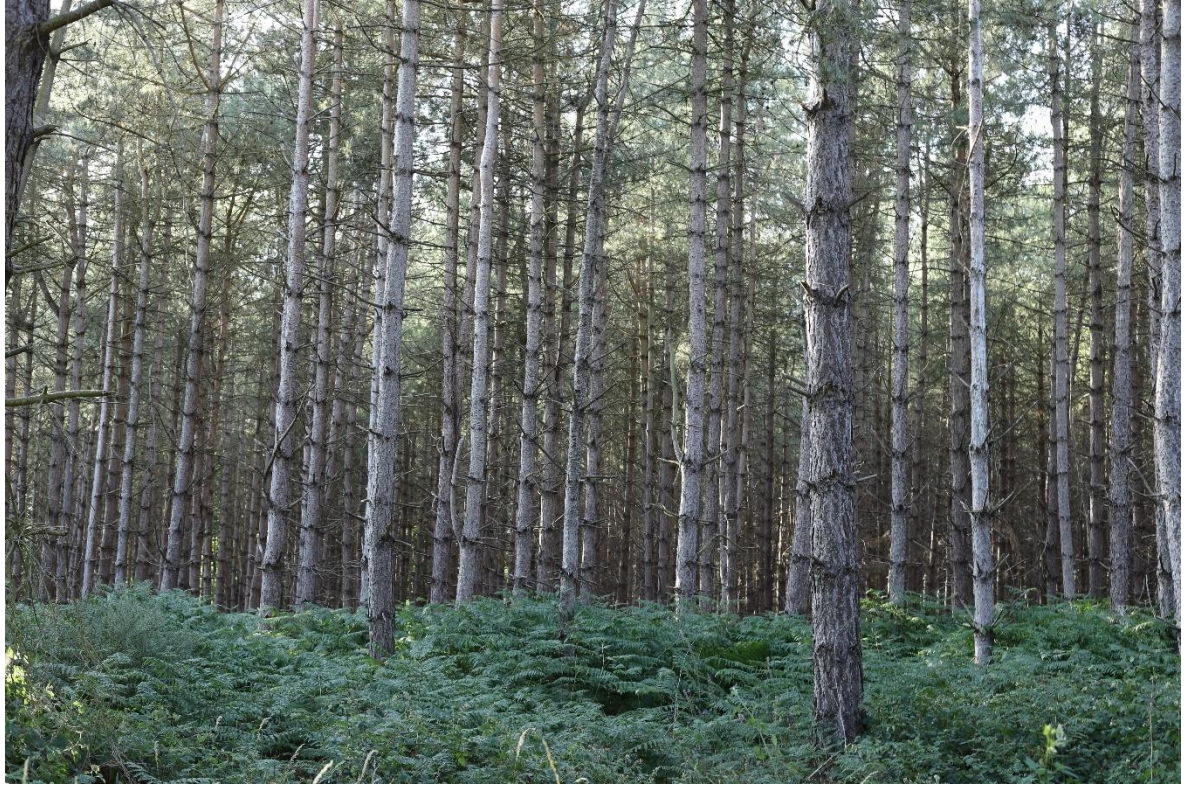
Viewpoint 19: Views across to Brockley Wood from Old Hall Lane.



Viewpoint 20: Views of Bentley Old Hall and Barn and towards Old Hall Wood.



Viewpoint 21: Views from Old Hall Wood footpath to beech trees.





Viewpoint 22: Views in Newcome Wood from footpath.



Viewpoint 23: Views right and left into Hall Heath wood and the wooded area with rhododendrons next to the railway line which is hidden from view.





Viewpoint 24: Views into Hall Heath wood from Church Road.



Viewpoint 25: Long distance views across large expanse of rural landscape with Bentley Old Hall and Old Hall Woods in the distance.



Viewpoint 26: Views to Malting House and pump from Church Road



Viewpoint 27: Views to Malting Cottage and Malting Farm from Church Road.



Viewpoint 28: Long distance views to Bentley Long Wood and across to Brockley Wood from Bentley Hall Road. Also views to Ponders Grove, Pond Hall Farm buildings and Pond Hall.





Viewpoint 29: View from Bridleway looking northwest to Old Hall Wood.



Viewpoint 31: View west from bridleway to Old Hall.



Viewpoint 32: View from Church Road into the Churchyard and Church with line of yews forming a central path to the Church.

