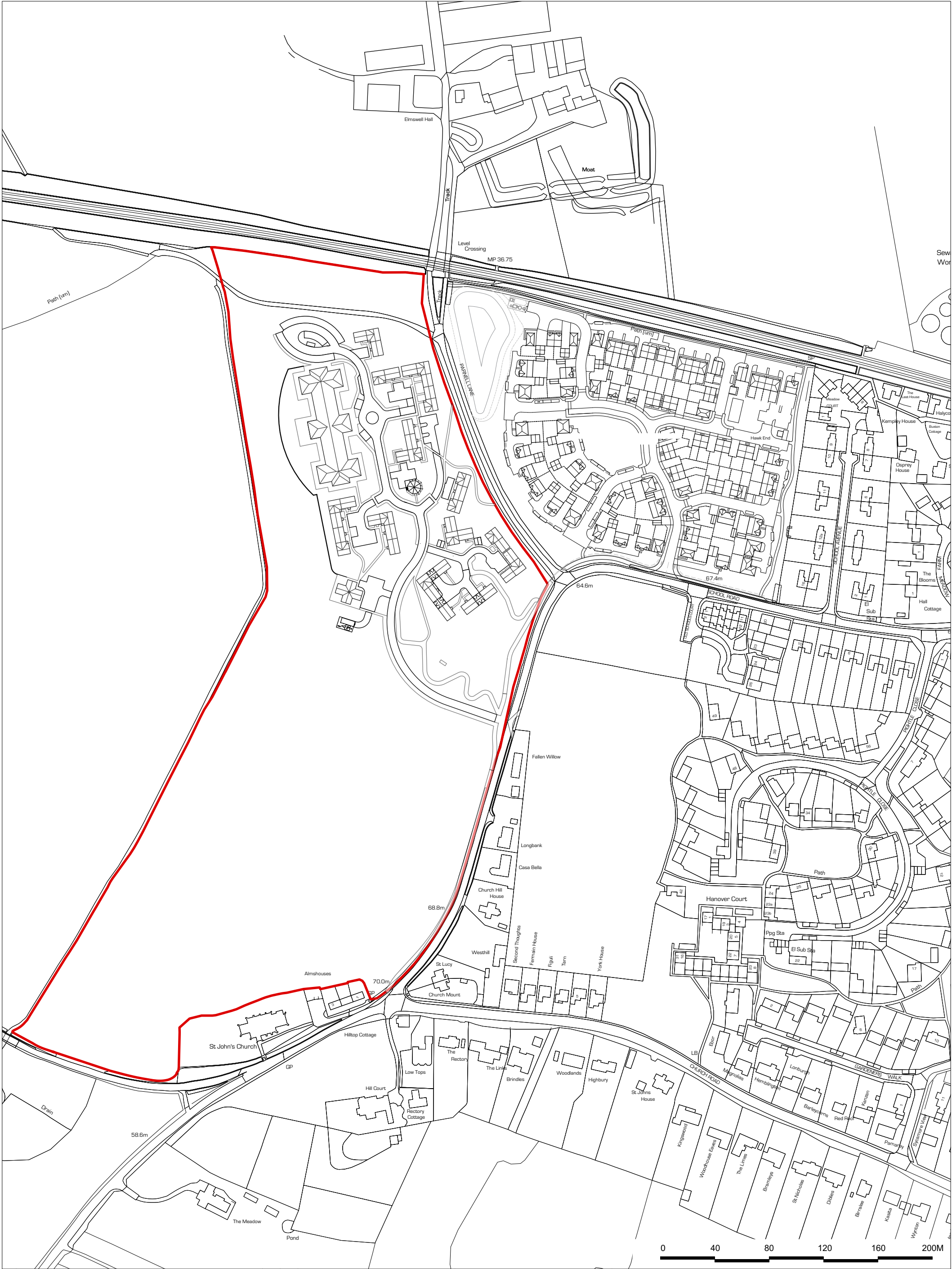



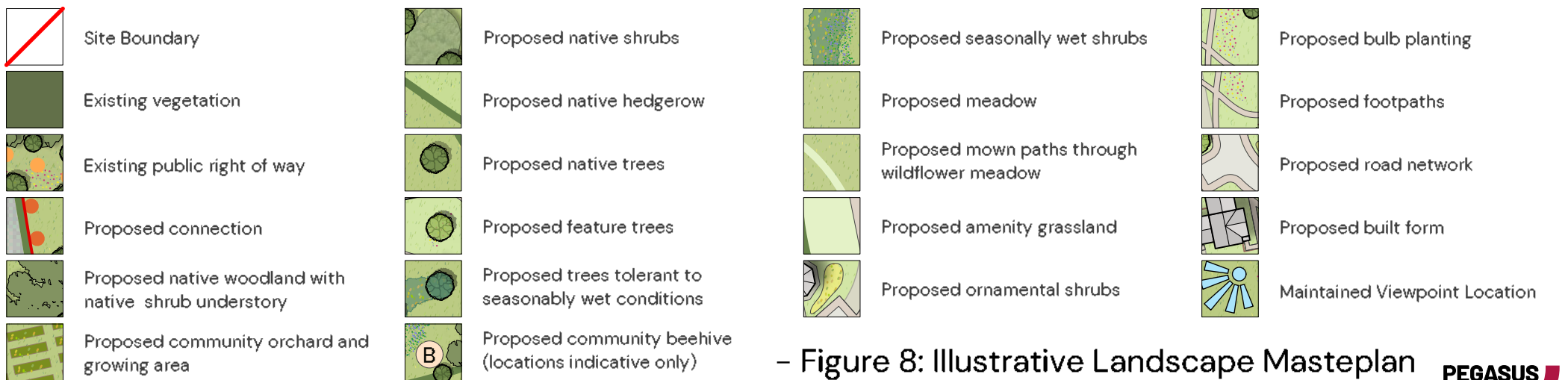


DRAWINGS



| Rev. | Date | Comments | By | Chkd. | <div>All dimensions are to be checked before any site fabrication by the contractor or sub contractors specialist suppliers etc... Do not scale plans. Use only figured or grid dimensions. Any deviation from this drawing is to be reported to CAM Architects Norwich Limited immediately.</div> <div>COPYRIGHT: This drawing must not be reissued loaned or copied without the consent of CAM Architects Norwich Limited. All errors, discrepancies should be reported to CAM Architects Norwich Limited immediately.</div> <div>This drawing has been prepared for the following purposes and does not constitute use for any other purpose:</div> <div>For Information Only</div> | <div>Client: Christchurch Land & Estates (Elmswell South) Limited</div> <div>Address: Land to The North and West of School Rd, Elmswell, Bury St. Edmunds, Suffolk</div> <div>Scale: 1:2500 @ A3</div> <div><div></div><div></div></div> | | | <div><div>CAM ARCHITECTS</div><div>Suite 3, The Old Church, St Matthews Road, Norwich, NR1 1SP</div><div>www.camarchitects.co.uk info@camarchitects.co.uk</div><div>01603 666151</div></div> | Project Details: 66 Bed Care Home(C2 Use) and Assisted Housing (C2 Use) and Associated works | |
|------|------------|---|----|-------|--|--|--|---|---|--|--|
| | | | | | | | | | | Drawing Title Block Plan As Proposed | |
| C | 05/10/2023 | Viewpoint Updated | TN | EA | | | | | | Drawing Number: | |
| B | 02/10/2023 | Proposed Dwellings Moved Away from School Road Corner | TN | EA | | | | | | Revision: | |
| A | 08/09/2023 | Graphics Updated | TN | EA | | | | | | 1661-CAM-XX-XX-DR-A-PL05 | |
| - | 20/07/2023 | | TN | EA | | | | C | | | |



– Figure 8: Illustrative Landscape Masteplan