



## Government move will erode public involvement in our health and care services

For more than 12 years, we have championed your views to shape, influence, and improve local NHS and social care services. Now, the Government wants to move patient and public involvement 'in-house'.

Read our statement to find out why we cannot agree that this is a good move in the interests of anyone using local NHS or social care services.

[Read our statement](#)

## What's next for us?

We don't yet know what the future may hold for the local Healthwatch network. To remove our network, the Government needs to change the law. Until then, we remain your independent voice in our local health and care systems. We'll continue to gather and share your experiences to shape standards of care at a time of huge change across our health and care systems.

We passionately believe that meaningful change in health and care can only come from understanding people's experiences across systems and services. As a local charitable company with an interest in shaping better standards of health and care across our communities, we'll be working on constructive plans in spite of this threat to our local Healthwatch provision - watch this space.



**News**



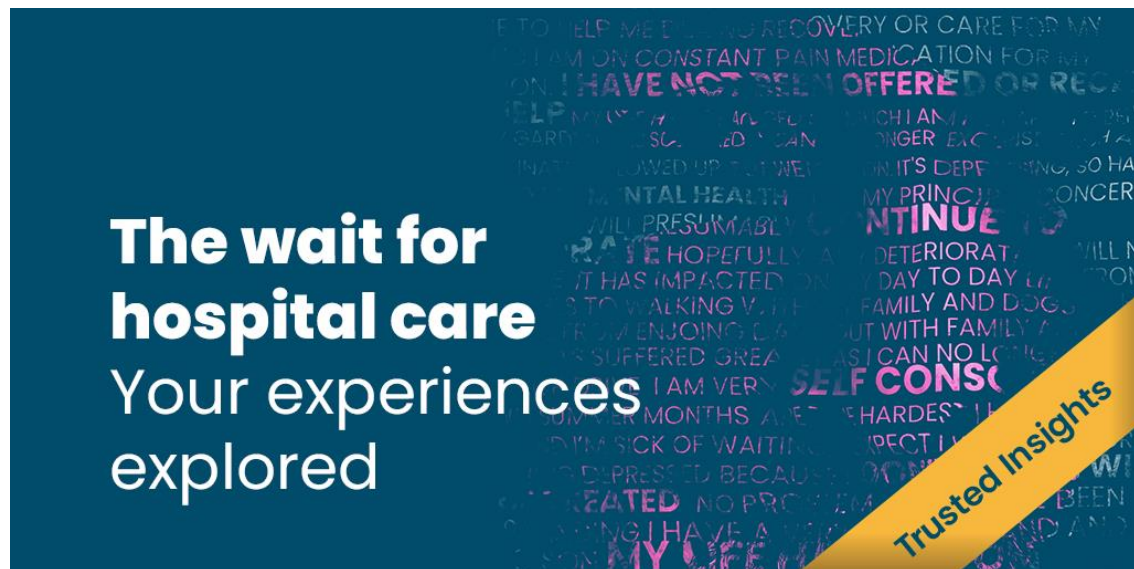
My Health, Our Future is our research programme exploring young people's physical and mental wellbeing across Suffolk. Follow our link to explore some of the ways MHoF is helping to shape local support.

[Find out more](#)



MHoF in action at the Eastern Education Group - watch our video to find out how local colleges are using MHoF to influence support for students.

## Your experiences of waiting for hospital care & how NHS leaders are responding to them



Read initial responses to our research from local NHS leaders and hospitals. We'll be sharing more information about their actions to address our key learning soon.

[Find out more](#)

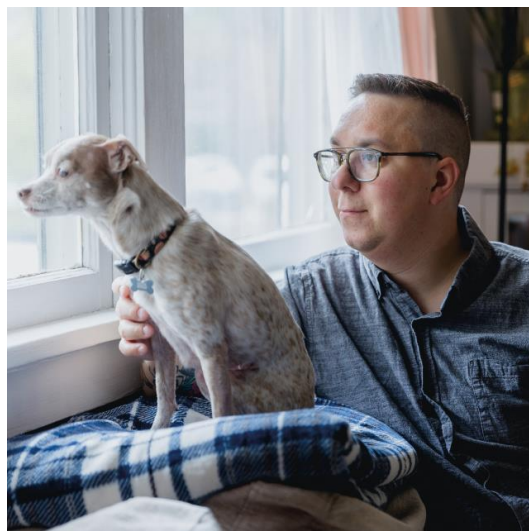
**Have you taken part yet?**



**Have you visited A&E for your mental health? Do you know someone who has?**

We're working with Suffolk User Forum to explore your experiences.

[Find out more](#)



### **Support for ADHD in Suffolk**

We want to know if your treatment for ADHD has been affected by changes within the NHS as well as how you feel about local services and support.

[Find out more](#)

[Find more of our latest news](#)

**It only takes a few minutes to feedback**



Find, rate, & review local NHS or social care services at:  
**[www.healthwatchsuffolk.co.uk/services](http://www.healthwatchsuffolk.co.uk/services)**



If you use GPs, hospitals, dentists, pharmacies, care homes, or other services, we need your feedback about them because we can use it to improve local standards of care. We passionately believe that listening and responding to your experiences is vital to create health and care services that meet the needs of people in Suffolk.

Help and support to feedback is available from our team. Call us for free on 0800 448 8234, or hit our button below to find more accessible ways to feedback.

[Leave a review](#)

[Find accessible ways to feedback](#)

**Follow us for more updates**



**More about us**



## How are we working toward a greener Suffolk

We recognise the important role every organisation has to contribute to making Suffolk **the greenest county** – an aim that involves everyone in enhancing natural and historic environments in Suffolk and responding to climate change.

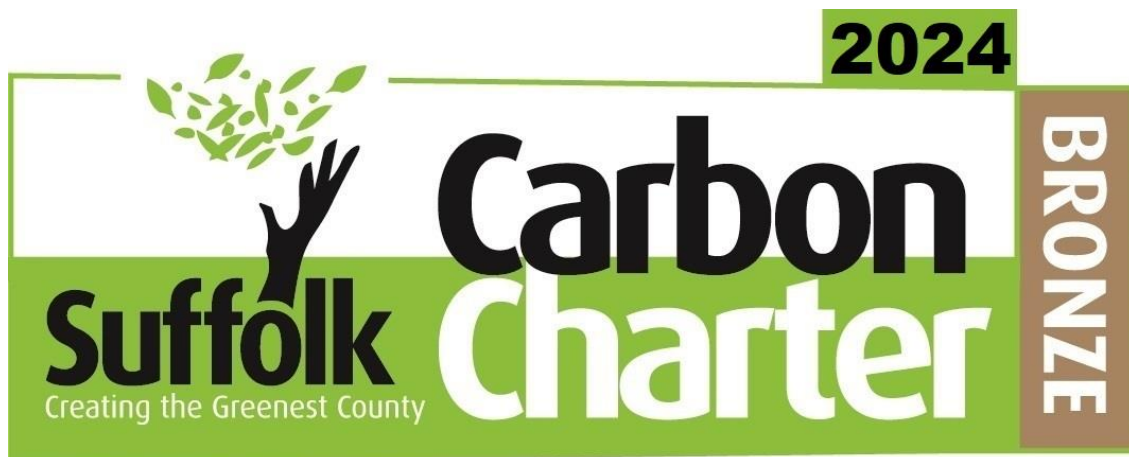
**[Find out more](#)**



## There's more to us - our trusted insights

Our experienced team supports evidence-based commissioning and the delivery of local services. We are adept at working in partnership, with more than ten years of development on research, engagement and co-production practice. Our insights help systems to think differently about support.

**[Find out more](#)**



*Copyright © 2025 Healthwatch Suffolk, All rights reserved.*

You are receiving this email because you opted in at our website.

**Our mailing address is:**

Unit 2 Norfolk House  
Lion Barn Industrial Estate  
10-11 Williamsport Way  
Needham Mkt  
IP6 8RW

[Add us to your address book](#)

[unsubscribe from this list](#) [update subscription preferences](#)

