

Mid Suffolk Magazine

Autumn 2025

Flying the flag for our district



INSIDE THIS EDITION

Recycle more in your
bins from 2026

Pages 8-9

Special focus: What's
happening in Eye

Page 11

Boost for sports facilities
across Mid Suffolk

Page 13



News and information from Mid Suffolk District Council

Contact us

Online - via our website www.midsuffolk.gov.uk

Phone - 0300 1234000 to be connected to any council service. Lines open 8.45am-5pm, Monday to Friday. On Tuesdays, our phone lines open at 10am.

To report an emergency repair, dangerous structure or homelessness outside opening hours, call 0808 168 7794

For our hard of hearing customers, our text mobile service is 07827 842833

In person - Our customer access point at 54 Ipswich Street, Stowmarket, is open 5 days a week.

- Mon - 9am-5pm
- Tues - 10am-5pm
- Wed - 9am-5pm
- Thurs - 9am-5pm
- Fri - 9am-4.30pm

Our new customer access point at Eye Library, alongside Mid Suffolk Citizens Advice, is open from 9.15am-12.30pm every Friday.

Looking ahead at improvements to recycling in 2026



Welcome to the latest issue of Mid Suffolk Magazine, which is packed full of useful news and information about what's happening in our fantastic district.

Inside, we look ahead at improvements coming to your recycling and waste collections in 2026.

Why are these changes happening? They will help us all to recycle more, cut what goes into your black bin, and be better for the environment. Recycling cuts carbon emissions and the need for new products to be made from raw materials.

There is information about our cost-of-living support, initiatives to help your home or business cut energy bills,

and details of exciting new sporting facilities in our district.

We also have a focus on Eye, and update you on the government's plans to reorganise local government and what it might mean for Mid Suffolk.

We're proud of our district and will continue to work hard to make it even better.

I hope you enjoy the magazine.

Cllr Andy Mellen,
Mid Suffolk District Council leader

Follow us

 www.facebook.com/MidSuffolkCouncil

 www.instagram.com/midsuffolk

This magazine is distributed to every household in the Mid Suffolk district. Would you like to offer feedback?
Email: communications@baberghmidsuffolk.gov.uk



The paper used for this magazine is carbon-balanced, as certified by the World Land Trust

Picture: Museum director Jenny Cousins with Cllr Tim Weller, outside the Bobby Building



£1m helps Food Museum serve up major restoration

Major work is starting at the Food Museum in Stowmarket after it was awarded a £1m grant by Mid Suffolk District Council.

This will help fund the restoration of the Grade II* listed medieval barn at the museum's entrance, refurbishment of the Grade II* listed Abbot's Hall, plus work at the Robert Bobby building - creating a permanent exhibition on the ground floor exploring how food is made.

Visitor numbers to the 84-acre site have grown to nearly 70,000 a year, contributing to Mid Suffolk's culture and tourism offer, and it also runs community activities.

Mid Suffolk's grant, which also unlocked a £3.95m grant from The National Lottery Heritage Fund, will deliver a substantial leap forward for the museum.

Cllr Tim Weller, Mid Suffolk's cabinet member for environment, culture and wellbeing, said: "The museum is a fantastic asset for our district, and this funding will be the catalyst for the next phase of its impressive transformation."

For every £1 the council has invested in it, the museum has brought in £10.55 from external funding sources.

Flying the flag for Needham Lake

Beautiful Needham Lake is the perfect place to visit this autumn - after it was officially recognised as one of the country's best green spaces.

The site, owned by Mid Suffolk District Council, recently won a prestigious Green Flag Award.

It is managed and maintained by the council's public realm team and rangers, and in recent years has seen the Duck and Teapot café open, electric bike hire introduced, an accessible play area upgraded, and improved facilities for day-trippers.



Grab your bike

We are investing millions to support safe walking and cycling across our district.

Mid Suffolk has recently provided £3m so that Suffolk County Council can build a new footpath and cycle way to connect Elmswell and Woolpit.

This vital link between the villages means residents will be able to safely access local services - such as the doctors, train station, schools and more - by foot or bike, rather than by car.

Other schemes we've funded over the last three years include new footpaths, bridleway upgrades, bridge and gate replacements in and around Eye, River Gipping path improvements between Stowmarket and Bramford, and improvements to public rights of way across the district.

We've also paid for a dedicated design engineer, hosted by Suffolk County Council for a year, to bring more Mid Suffolk schemes to life more quickly.



Community transport

Checked out the Mid Suffolk Taxi Bus or Rural Connect services supported by our Rural Transport Grants Scheme yet?

Mid Suffolk Taxi Bus now runs services linking Stowmarket to Debenham, Thurston and Bacton (and many villages in between), so it's worth checking to see where you can save a car journey or several.

Scan the QR code to check timetables, the latest route updates, and book your ride.

For Rural Connect simply email info@communitiestogether-ea.org or phone 01449 614271 to make a booking.



Making things Eezy

Needham Lake has two five-star rated electric bikes for hire - perfect for any fitness level, and a fun way to explore Mid Suffolk's stunning scenery and independent businesses

We even subsidise the rental rate.

Scan the QR code to book - and look out for more locations soon.



Suffolk's Big Weekend is back

The Big Weekend has returned for 2025, giving you the chance to enter a free prize draw and win exclusive experiences at some of Suffolk's most prominent attractions.

The event, launched in Babergh and Mid Suffolk last year, was so successful it has gone county-wide, with attractions and businesses

offering unique experiences and prizes.

These include spa treatments, animal experiences, leisure sessions, overnight stays, and much more.

The Big Weekend takes place on 18 and 19 October; you simply have to enter the ballot before 29 September.

You can enter the prize draw at: www.suffolkbigweekend.co.uk.



New homes for council tenants in Bramford

Councillors have accepted the keys to another eight affordable homes in Bramford, following on from 16 new-build properties received earlier this year.

As part of Mid Suffolk's ongoing investment in affordable housing, four of the latest new homes in Loraine Way will be used to house council tenants, while the remaining four will be

offered as shared ownership properties.

They are part of Bellway's new development and have been handed over as part of a section 106 agreement - a legal obligation undertaken by a developer as part of the planning process to ensure affordable housing is provided alongside private sale properties.

Cllr Richard Winch, cabinet member for housing and property, said: "We are

working hard to meet the ever-growing need for high-quality, affordable housing within our district."



Picture: Ward councillor, Cllr James Caston, and cabinet member Cllr Richard Winch receive the keys from Bellway's Matthew Dunlop.

Shaping Suffolk Together

Explained: How councils are set to change in Suffolk

In three years, there will be a new council delivering services where you live. Here, we explain what it means for you.

How do things work now?

- Suffolk County Council manages the likes of roads, social care for adults, and children's services.
- Mid Suffolk District Council is responsible for things like collecting your bins, planning decisions and housing.
- Town and parish councils run things like community centres, parks and markets.

What will change?

In 2028, the government has said it wants to replace all county, district and borough councils with new 'unitary' councils - so, one council delivering all their services, making it simpler for you. Town and parish councils continue as before.

How will this work in Suffolk?

It hasn't been decided yet, but the government has asked existing councils to put forward proposals.

After listening to your feedback, Suffolk's district and borough councils, including Mid Suffolk, agreed to develop a case for **three unitary councils** covering different parts of the county.

These will be big enough to deliver economies of scale - halving the existing number of councils and unlocking £34m in annual savings - but still be local enough to meet community needs.

In contrast, Suffolk County Council proposes a single council covering the whole county.

Have the public been asked what they think?

Yes, there has been widespread engagement and we've listened to communities. 2,200+ people responded to a survey, with more people ranking "being local" as their top priority for future councils than any other attribute.

What happens next?

Councils meet in late September to agree a final submission to send to government, who will carry out a public consultation later this autumn before making a final decision.

To find out more visit: ThreeCouncilsForSuffolk.org or scan the QR code.



Street cleaning taskforce has an instant impact

Overgrown areas cut back, pathways cleared, signs cleaned, litter picked up and graffiti wiped away - Mid Suffolk District Council's new REACT team has had an immediate impact.

Launched less than six months ago, the street cleaning taskforce are 'first responders' to reactive cleansing incidents such as fly tipping, littering and graffiti.

The two-person team are easy to spot in their special REACT van, increasing the council's capacity to respond to urgent and reactive street cleaning issues across the district.

It has been funded through £360K of re-invested income from Gateway 14 - the council-owned business, innovation, and logistics park in Stowmarket.

Mid Suffolk's cabinet member for environment, culture and wellbeing, Cllr Tim Weller, said: "By keeping our local environment clean and nature-friendly, we can continue to ensure our district remains a great place to live, work, do business,



Street Cleansing Team members Jason and Billy

visit, and somewhere we can all be proud of."

Scheduled street cleaning and ground maintenance work in Stowmarket has also been increased, while Mid Suffolk has worked collaboratively with Stowmarket Town Council to part-fund its town rangers.

What a difference REACT makes

Some of the work completed by the REACT team has included clearing overgrown footpaths.

This work took place in Woolpit shortly after the team launched - with the results speaking for themselves.

It's an example of the types of jobs the team has taken in their stride since May.

Before



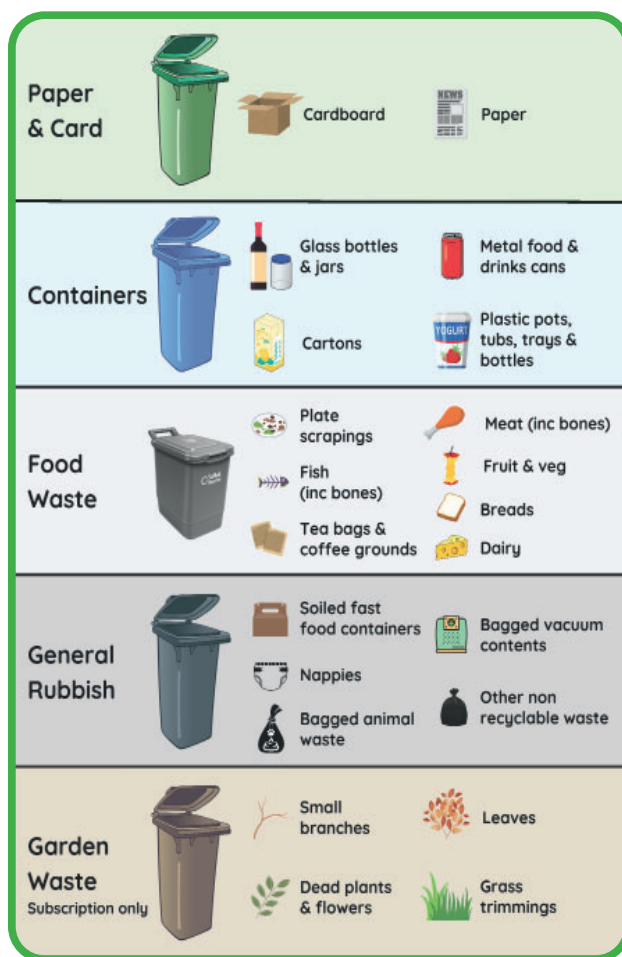
After

Better recycling coming in 2026

- what it means for you

You'll be able to recycle much more in your household bin collections from June 2026.

What you can put in your bins from June 2026



Why and when are these changes happening?

These are a part of nationwide changes to improve our recycling habits. By making it easier for you to recycle more, it will reduce waste going to incineration and be better for our environment. They come into effect in Mid Suffolk in **June 2026** - with national targets requiring us to recycle 60% of waste by 2030.

What will I be able to recycle?

As you'll see from the diagram (left), you will be able to recycle more from home than ever before.

Glass and cartons such as Tetra Pak - which is currently taken to Suffolk's recycling centres and bottle banks - will go in your existing recycling bin, along with **metal tins/cans and plastics**.

You'll get an additional bin specifically to recycle **paper and card**. Separating it improves its recycling value and quality.

And there will be a brand new **weekly food waste collection service**, with every home getting a 5-litre kitchen caddy and 23-litre outdoor caddy for kerbside collection.

Your food waste will go to an anaerobic digestion plant - generating green fuel (biomethane) and turned into soil fertiliser.

Why will my general waste bin (black bin) only be collected every three weeks?

It simply won't fill up as quickly. About 60% of the waste that currently goes into black bins will go into recycling bins in future - eg. the food caddy. Overall, you will have extra bin capacity and be recycling much more.

But won't three-weekly waste collections result in my bin smelling?

Most unpleasant bin odours come from food waste, which will soon be collected weekly in a separate food caddy - rather than fortnightly in your black bin, as happens now.

This change should significantly reduce smells and help prevent issues with vermin.

For households with exceptional needs - such as larger families or medical requirements - our waste team will continue to offer case-by-case support.

What if I don't have room for an extra bin?

We will work with residents and communities where there are legitimate storage concerns to find the right solutions. Other councils already operating similar services have supplied additional bins to the vast majority of their households.

Will my collection day change?

Probably not. We try to avoid changing collection days as we know this can be confusing. As is usual though, a small number of changes will be made each year due to new housing developments, road changes etc.

Will I have to put different bins out on different days?

No, we want to keep it simple and your food waste bin will be collected every week on your usual bin day. So, you'll be putting out two bins instead of one (although both will be collected on separate trucks).

Every household will get further information about these changes before they happen.

What a typical collection calendar will look like

Collection Calendar	Week 1	Week 2	Week 3
General waste			
Recycling			
Food			
Garden			

- GENERAL WASTE - Three weekly
- RECYCLING - 2 weeks in every 3
- FOOD - Weekly
- GARDEN - Fortnightly
- PATTERN repeats - Every 3 weeks



Needham Market FC scores new stand

Pic credit:
Ben Pooley

Over the summer, work has been taking place to build a new stand at Needham Market Football Club's stadium following a £100,000 award from Mid Suffolk District Council.

The money has come from the Community Infrastructure Levy - a funding pot paid for by housing developers and allocated by the council, with grants available for projects which help local infrastructure keep pace with housing growth.

The stand was set to be completed in time for the new season and accommodate 285

spectators while providing modern facilities such as terrace seating, accessible toilets and a lift.

In total, the CIL award covered almost half of the project, with the remaining funds coming from £10,000 of our capital grant funding, the Premier League Stadium Fund, the club's own money and its directors.

How to sign up to planning alerts for where you live

If you want to keep up to date with planning applications where you live, you can sign up for email alerts to stay in the loop.

You can do this in six easy steps:

1. Visit planning.baberghmidsuffolk.gov.uk or scan the QR code.
2. Click 'register' to create an account and fill in your details.
3. Confirm your email address by clicking the link in the verification email.
4. Once logged in, go to 'search' then 'planning'. From here, you can fill in your search conditions - eg. your postcode or address - to create a list of relevant applications.
5. On this new page, click 'save search' and then select 'yes' to be notified via email about

new updates relating to your search.

6. Hit save and you're done!
7. You'll get emails when there's a new application or when there's more information on an existing proposal.



Hidden treasures of Paddock House

During the archaeological survey on the Paddock House site in Eye, where we are developing 16 affordable homes, some historical gems were found.

A fabulous, crafted horse

carved from bone has been uncovered along with some unglazed pottery dating back to between the 11th and 13th centuries.

Once the survey is complete, work on the affordable homes will begin.



Recycle your electricals

Eye is one of 6 places in Mid Suffolk where you can now recycle your broken electricals in striking new pink bins.

Around 103,000 tonnes of electricals are thrown out each year in the UK, instead of being reused or recycled.

Where electricals can't be repaired, they can now be put into the pink bins - minimising electrical waste and keeping materials in use for longer.

The Eye electrical recycling bin is at **Buckshorn Lane car**

park, but there are also bins located at:

- Iliffe Way car park, Stowmarket
- Mid Suffolk Leisure Centre, Stowmarket
- Elmswell train station
- New Green Community Centre, Thurston
- Station Yard car park, Needham Market

The scheme has been supported by £47,000 from Material Focus' Electricals Recycling Fund.



Progress Power community fund applications open

The Progress Power Community Benefit Fund is open, inviting bids from community organisations and projects in Eye, Yaxley, Mellis, Brome, Oakley, and Thrandeston.

Managed by Mid Suffolk District Council, the fund is provided by power generation company Drax as part of the development of the Progress Power Station on the former Eye Airfield.

Community groups and projects can apply for grants up to £10K. For example, Yaxley and Mellis Pre-School, received £10K to install an outdoor classroom.

Scan this QR code to find out more.



Free help to make homes and businesses more energy efficient

We want to work with you to improve the energy efficiency of homes and business premises - reducing your bills and carbon footprint at the same time.

If you are a homeowner, a private tenant or a landlord with fewer than five properties in Mid Suffolk, you could be eligible for our Cosy Homes initiative.



The scheme offers a free assessment of your property and up to £5,000 in funding to cover the cost of installation of any recommended measures, such as loft and cavity wall insulation.



To find out if you qualify, visit: www.midsuffolk.gov.uk/w/mid-suffolk-cosy-homes, scan the QR code above or call us.

Solar for business

Businesses can now also reduce their carbon emissions and receive cheaper energy by signing up to have solar panels provided and installed on their premises, for free, thanks to Mid Suffolk District Council.



To find out more call 01284 757631 or scan the QR code.

Support for listed building owners

Mid Suffolk is clearing the way for thousands of listed building owners to make sensitive energy efficiency upgrades, through a pioneering new approach.

Historic, listed buildings often suffer from poor energy performance due to factors such as poorly fitting windows and single glazing.

Now, working closely with Historic England, the council will become one of the first in the country to make improvements quicker and easier.

A new Local Listed Building Consent Order will soon allow Grade II listed property owners to upgrade or replace windows without having to make a separate application, subject to conditions.

More detailed guidance for owners of listed properties is available on our website - scan the QR code for details.



Investment in sporting facilities in Stowmarket is continuing - with £5.2m now approved for a new pavilion at Chilton Fields.

Including eight changing rooms, social spaces, a bar, upper sports viewing terraces and a large multi-purpose area - the new building will replace the existing clubhouse and provide additional capacity for sports clubs and the local community.

New cricket nets (pictured) and a trim trail have already been installed on site, and construction work will soon

begin on a new active track.

Meanwhile, there are plans to install a 200m oval mini-athletics track at Stowmarket High School later this year and work is continuing with the Football Foundation to also deliver a 3G pitch on the school site.

Mid Suffolk Council continues to engage with sports clubs and stakeholders to deliver high-quality facilities benefitting the whole community.



Schemes get a sporting chance...

The new Community Sports Infrastructure Grant is aimed at supporting projects beyond Stowmarket - with organisations across the district invited to bid for between £20k and £250k for their large-scale sporting schemes.

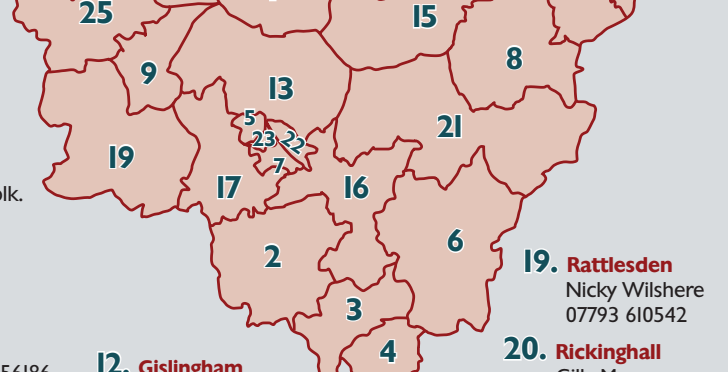
Eligible projects may include upgrading, extending, or constructing sports facilities; installing floodlights; creating accessible activities or developing new green spaces or pitches to support physical activity.

Scan the QR code to find out more.



Who is your councillor?

There are 34 councillors representing 26 different wards in Mid Suffolk. They serve their community and people living in it.

- 
1. **Bacton**
Andrew Mellen
07955 434435
 2. **Battisford & Ringshall**
Dr Daniel Pratt
daniel.pratt@midsuffolk.gov.uk
 3. **Blakenham**
Adrienne Marriott
07928 512583
 4. **Bramford**
James Caston 07548 156186
 5. **Chilton**
Lorraine Baker 07928 512580
Terence Carter 07548 153770
 6. **Claydon & Barham**
David Penny 07761 319157
John Whitehead 01449 760521
 7. **Combs Ford**
Miles Row 07928 512582
Keith Scarff 01449 770966
 8. **Debenham**
Teresa Davis 07928 512588
 9. **Elmswell & Woolpit**
Sarah Mansel 07860 829517
Jen Overett 07928 512591
 10. **Eye**
Lucy Elkin 07928 512590
 11. **Fressingfield**
Lavinia Hadingham
07860 829499
 12. **Gislingham**
Rowland Warboys
07484 186121
 13. **Haughley, Stowupland & Wetherden**
Agnes Watson 07599 828819
Janet Pearson 07928 512592
 14. **Hoxne & Worlingworth**
Matthew Hicks
07824 474741
 15. **Mendlesham**
Andrew Stringer
07774 199061
 16. **Needham Market**
Terry Lawrence 07928 512599
Dr Ross Piper 07928 512581
 17. **Onehouse**
John Matthissen
07976 308128
 18. **Palgrave**
Tim Weller 07928 512586
 19. **Rattlesden**
Nicky Wilshire
07793 610542
 20. **Rickinghall**
Gilly Morgan
07928 512578
 21. **Stonham**
Nicholas Hardingham
07928 512584
 22. **Stow Thorney**
Colin Lay 07928 512595
James Patchett 07928 512587
 23. **St Peter's**
Ollie Walters 07514 951199
 24. **Stradbroke & Laxfield**
Anders Linder
07928 512585
 25. **Thurston**
David Bradbury 07514 951188
Harry Richardson
07842 322913
 26. **Walsham-le-Willows**
Richard Winch
07931 709486

For more information, visit our website.



How the barn was converted in Wingfield



Can we help your business?

We offer a range of support to help local businesses to flourish.

Since 2023, we have allocated £1.1m from the Government's Rural England Prosperity Fund to 47 applicants.

For example, TH Feaveyear and Son in Wingfield was one of these recipients and used the money to convert a dilapidated barn into a stunning holiday lodging (pictured above).

So what could be available to your business?

Rural Business Growth Fund

Funded by the Government's Rural England Prosperity Fund, this offers up to £10,000 to projects which

focus on sustainability, diversification and bolstering the local visitor economy.

Mid Suffolk Rural Support Fund

This is our brand new £300k fund to help towns and villages outside of Stowmarket to revitalise their high streets, improve infrastructure and protect community assets.

All business grants and funding opportunities can be found at:

www.heartofsuffolk.co.uk/invest/businesssupport/grants-and-funding or www.midsuffolk.gov.uk/community-funding.

Helping you with the cost of living

Support is available to help residents heat their homes and manage energy bills this winter.

The Local Welfare Assistance Scheme offers grants for energy and utility costs, as well as warm items. Applications can be made at www.suffolk.gov.uk/LWAS or by contacting your local Citizens Advice.

Citizens Advice also offers energy advice, benefit entitlement guidance and help to negotiate with creditors.

Suffolk Centres for Warmth can help you join the priority services register and deal with energy suppliers. Visit www.midsuffolk.gov.uk/suffolk-centres-for-warmth or call our customer services team for a referral.

For households using oil or LPG, Community Action Suffolk runs bulk purchasing schemes.

Scan the QR code for a full list of cost-of-living resources.



Town centre fund hits the bullseye with new darts venue

A community darts venue will be the first new venture to take flight in Stowmarket thanks to Mid Suffolk District Council's initiative to enhance the town centre.

A total of £125,000 in match funding has been awarded from the council's £1.5m Stowmarket Town Centre Gateway Fund, launched to bring empty high street units back into use.



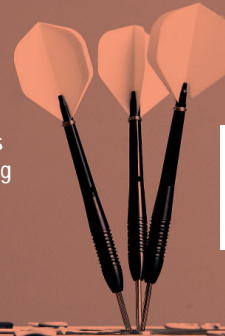
It is due to be set up in the former Stannards store, in Tavern Street.

A further £615,000 from the fund is also set to be invested into the John Peel Centre, supporting the arts and cultural venues plan to sensitively restore the first-floor ballroom - providing a stunning 100-capacity space for mixed community use, including catering facilities and lift access.

Cllr Richard Winch, cabinet member for housing and property, said: "This fund is helping bring new attractions to the town centre."

The Gateway Fund is possible thanks to the council's income from its investment in the Gateway 14 business, innovation and logistics park on the edge of the town.

To find out more about the fund visit www.midsuffolk.gov.uk/making-our-stowmarket or scan the QR code.



Innovation in our district

Work is under way on the £18m Stowmarket Innovation Gateway at Gateway 14.

Mid Suffolk District Council's state-of-the-art centre - set to be completed next spring - will boost new businesses, support entrepreneurs and train the future workforce in higher-skilled roles.

As well as offering office space for high growth start-ups, collaboration and innovation spaces, meeting rooms and a café, the centre will offer training opportunities - linking up with education providers.

It is expected to have a particular focus on the green economy, digital and AI technology.

